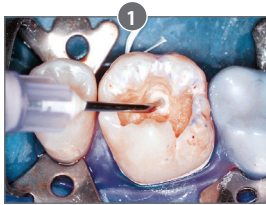


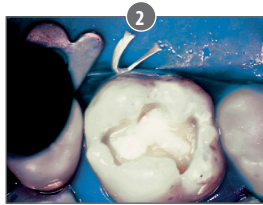
Lime-Lite™ ENHANCED LIGHT CURE CAVITY LINER

Calcium, Phosphate and Fluoride Releasing • Moisture Tolerant • Universal Dentin Shade • Radiopaque

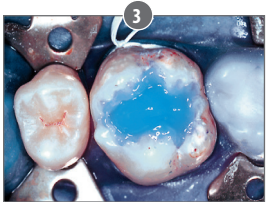
No Sensitivity and a More Adhesive Cavity Liner and Base



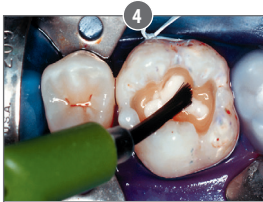
Place Lime-Lite Enhanced in the cavity prep.



Light cure Lime-Lite Enhanced 20 seconds.



Etch the cavity prep with Etch-Rite 38% phosphoric acid.



Apply DenTASTIC UNO to the moist dentin surface for light cure, or UNO + DUO for dual cure procedures.



Final restoration incrementally layered with composite.



Photos courtesy of Dr. C. H. Pameijer



Specially formulated for use with adhesives, composites and conventional restorative materials

Improved moisture-friendly formula:

- Greater adhesion to dentin
- Greater release of calcium, phosphate and fluoride
- Durable – high compressive strength and wear resistance
- Shock absorbing – will not fracture or crumble
- Contains no Bisphenol A, no Bis-GMA, and no BPA derivatives



	LLE	4 x 1.2mL/2 gm syringes Lime-Lite Enhanced + 20 applicator tips
	LLE3	3mL/5 gm syringe Lime-Lite Enhanced + 20 applicator tips

	20L20	Pink, 20 ga x 1/2", Prebent Tips, pkg. 20
	20L100	Pink, 20 ga x 1/2", Prebent Tips, pkg. 100

PULPDENT® Corporation

80 Oakland Street, Watertown MA 02472 USA • Tel. (617) 926-6666 / (800) 343-4342 / Fax (617) 926-6262 • sales@pulpdent.com • www.pulpdent.com